

CREATION OF COMMUNITY ENTERPRISES



1

UNDERSTANDING LEGAL FORMS

- Explore how legal structures empower communities to build organizations that balance social purpose and economic sustainability.
- Learn how law becomes a tool for impact, not just regulation.

2

CORE LEGAL MODELS

- Six key forms drive the European social economy:
- Cooperatives, Associations, Foundations, Social Enterprises, NGOs, and Companies Limited by Shares (used for social purposes).
- Each model offers unique approaches to governance, ownership, reinvestment, and accountability.



3

CONNECTING LAW AND MISSION

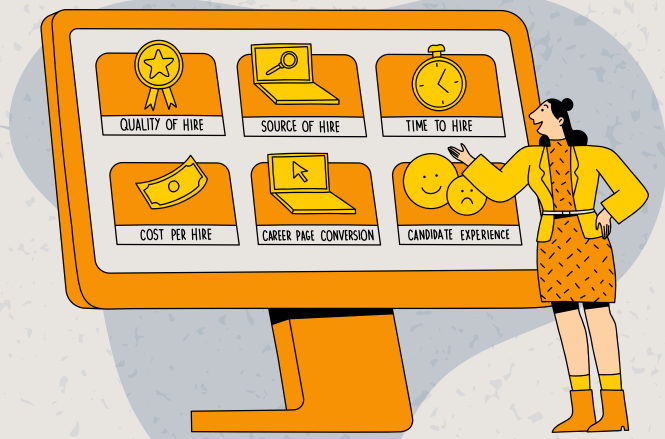
- Legal frameworks define how organizations make decisions, use profits, and include stakeholders.
- Choosing the right form ensures transparency, participation, and alignment with social goals.



4

COMPARATIVE INSIGHT

- Different countries provide different pathways for social enterprise creation.
- The module examines examples from Greece, Spain, Belgium, Lithuania, and Austria, revealing how national policies shape the social economy landscape.



5

BUILDING SOCIAL IMPACT

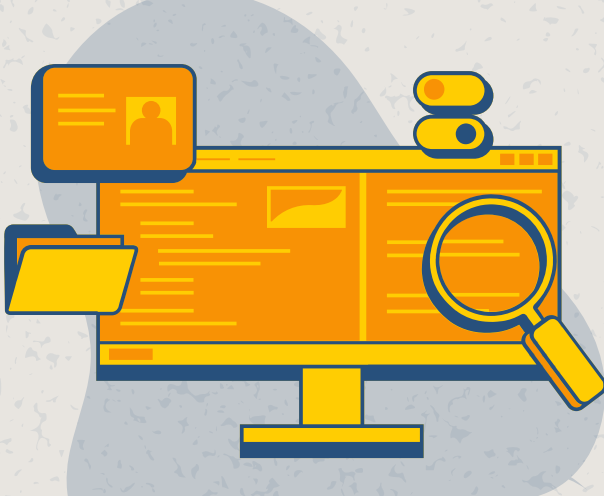
- Organizations in the social economy prioritize public benefit over private gain.
- They reinvest surpluses, foster inclusion, and support democratic and ethical governance.
- Learners explore how legal choices can strengthen long-term mission success.



6

EMPOWERING CHANGEMAKERS

- Designed for aspiring entrepreneurs, youth leaders, and innovators, this module builds the ability to:
- Choose the most suitable legal form
- Apply governance principles
- Connect legal understanding with real-world social innovation



7

REAL-WORLD INSPIRATION

- Examples of impactful organizations studied in this module include:
- Mondragon (Cooperative – Spain)
- La Caixa Foundation (Foundation – Spain)
- SMart (Social Enterprise – Belgium)
- Fifty-Fifty (NGO – Greece)
- Auara (Company Limited by Shares – Spain)
- FUNDEUN (Foundation – Spain)
- WKO (NGO / Chamber Model – Austria)

